



*Clayton Court*  
APARTMENTS

*A Rental Community*  
Wilmington, Delaware



**Proudly Managed By**  
**Fairville Management Company, LLC**



**Offering Equal Opportunity in  
Housing and Employment**



**A** state of the art renovation in 2010 transformed this subsidized housing property into a showcase affordable housing community. Clayton Court features a fully renovated exterior with new siding and stone facade, new exterior doors, energy efficient windows and professionally landscaped grounds. The interiors boast new kitchens and bathrooms. Attractive design, spacious living and an ideal location make Clayton Court the perfect place to call home.

**C**layton Court is conveniently located on a DART Bus Route in the City of Wilmington. This prime location is just minutes from I-95, I-495 and I-295 and is within walking distance to local hospitals, shopping, schools, churches, restaurants, daycare centers.



## **Community Features**

- **24 hour on Site Emergency Maintenance**
- **Secure Building Entrance**
- **Playground**
- **Community Center**
- **Laundry Facility**
- **Limited Off Street Parking**

## **Apartment Features**

- **Spacious Living Area**
- **Private Entrance**
- **Original Unit Hardwood Flooring**
- **Fully Equipped Eat In Kitchen**
- **Energy Efficient Heating and A/C**
- **Mini blinds on all windows**
- **Accessible Units with Washer and Dryers**



## **Offering Efficiencies, One, Two & Three Bedroom Units**

**Income Restrictions Apply  
Project Based Section 8**

**For Additional Rental Information:**

**Clayton Court Apartments**

**502 N. Dupont Street**

**Wilmington, DE 19805**

**Phone (302) 571-8295**

**Fax (302) 571-9083**

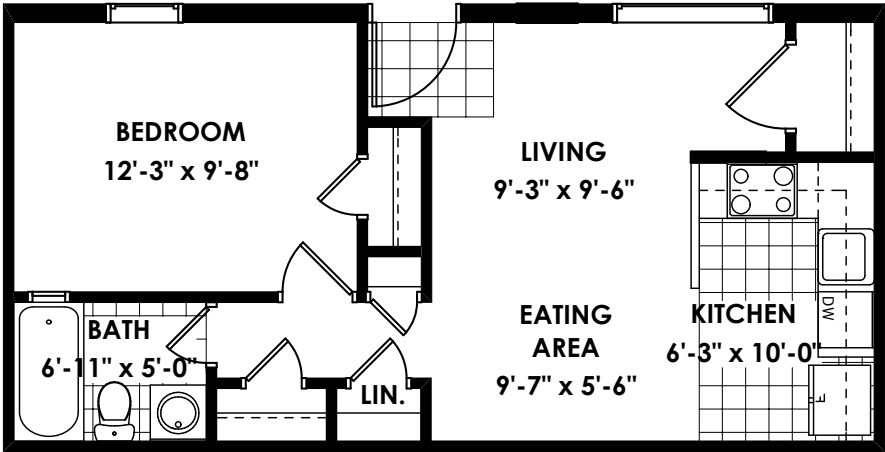
**TTY 1 (877)-489-2479**

*Visit our web site: [fairvillemanagement.com](http://fairvillemanagement.com)*

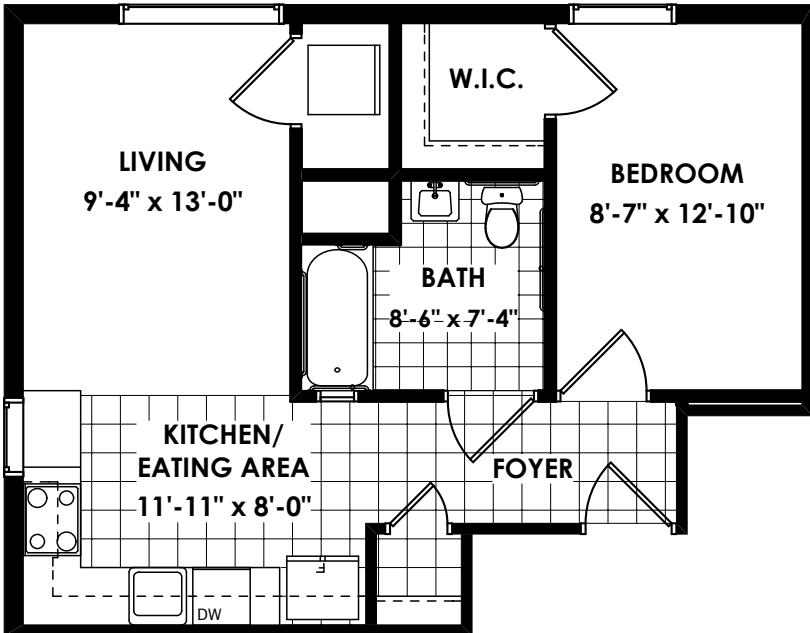


**Offering Equal Opportunity in  
Housing and Employment**

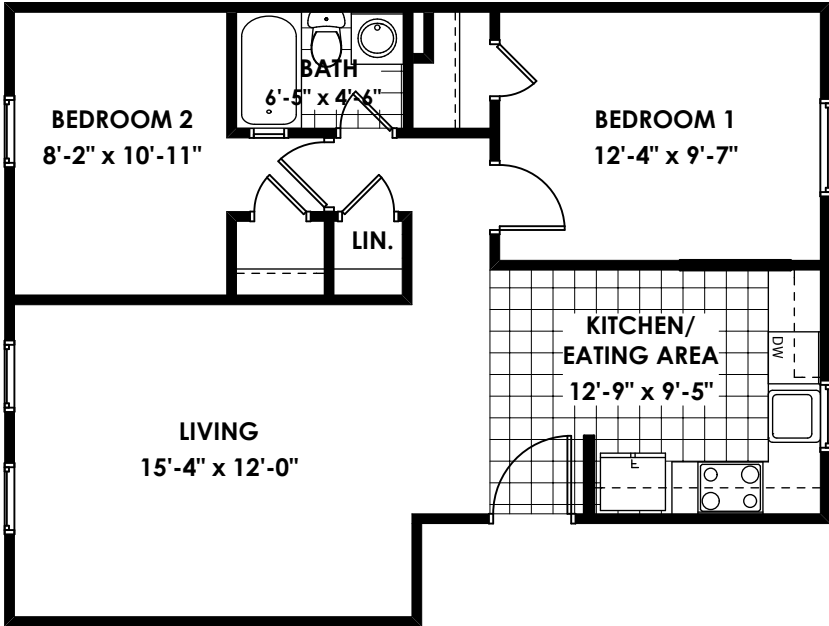




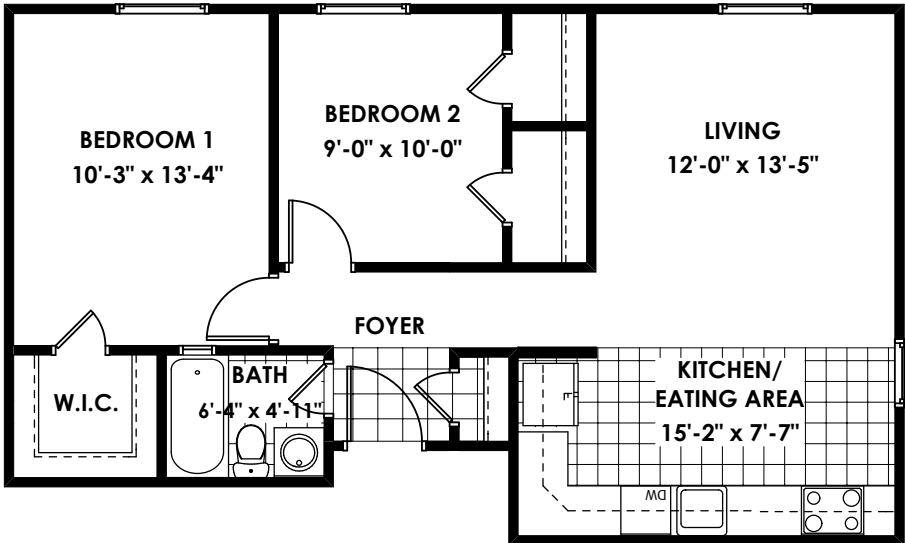
1 Bedroom Unit 'A' 504 S.F.



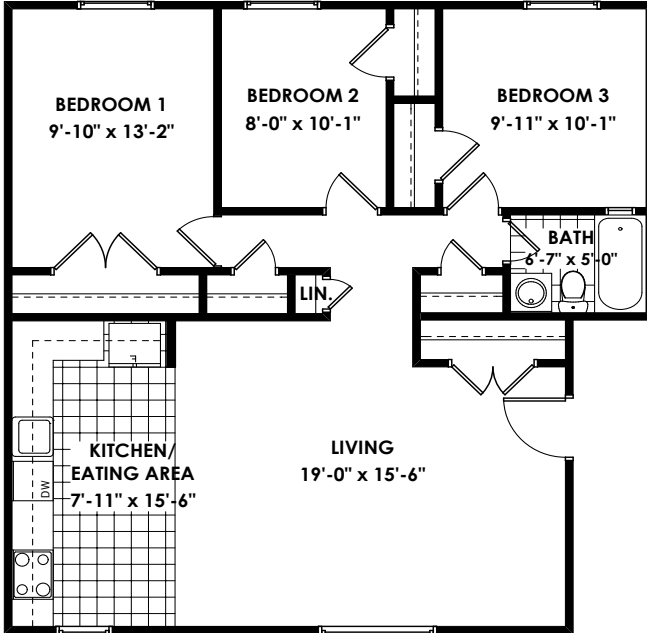
1 Bedroom Unit 'B' 558 S.F.



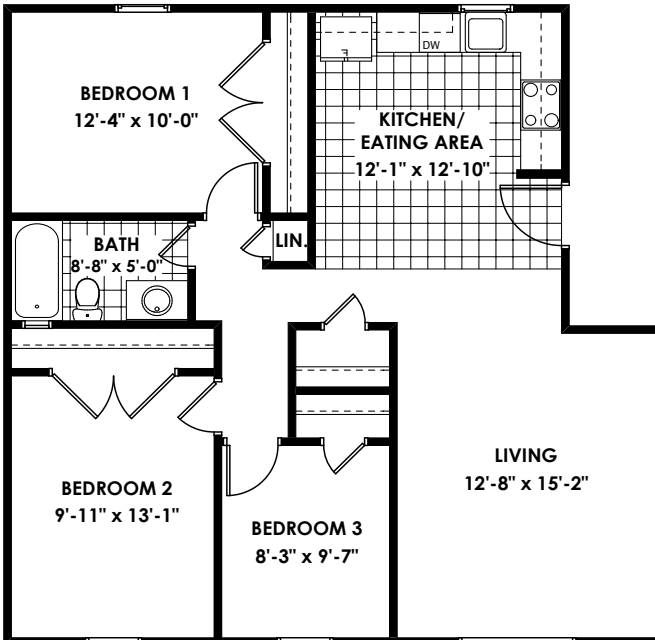
**2 Bedroom Unit 'B' 700 S.F.**



**2 Bedroom Unit 'A' 727 S.F.**



**3 Bedroom Unit 'B' 950 S.F.**



**3 Bedroom Unit 'A' 975 S.F.**